

STANDARD Q Dengue Duo



Multi-test in one platform

Dengue NS1 antigens can circulate in human body from the 1st day up to the 9th day after the onset of the symptom. However, the level of antigens declines rapidly with the elevated level of the anti-Dengue NS1 antibodies. In primary Dengue infection, anti-Dengue IgMs are detectable 3-5 days after onset of the symptom. Anti-Dengue IgGs are detectable 14 days after the onset of the symptom and may persist for many years. In secondary Dengue infection, anti-Dengue IgGs elevate in 1-2 days after the onset of the fever and are often accompanied by an elevation of anti-Dengue IgMs. STANDARD Q Dengue Duo is an immunochromatographic assay for the detection of Dengue NS1 antigens and specific IgM and IgG to Dengue virus in human serum, plasma, or whole blood samples. This test kit is for *in vitro* use only.





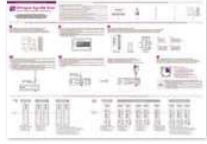
Performance characteristics

	Sensitivity	Specificity
Dengue NS1 Ag	92.9% (184/198)	98.7% (222/225)
Dengue IgM	97.5% (77/79)	96.6% (346/358)
Dengue IgG	97.2% (140/144)	96.2% (282/293)

General Information

	Dengue NS1 Ag	Dengue IgM/IgG
Intended Use	Detection of Dengue NS1 Ag	Detection of specific IgM and IgG to Dengue virus
Storage	1-40°C / 34-104°F	1-40°C / 34-104°F
Specimen type	Serum / Plasma / Whole blood	Serum / Plasma / Whole blood
Specimen volume	100µl	10µl
Testing time	15 mins (Do not read after 30 mins)	15 mins (Do not read after 30 mins)
Shelf life	24 M	24 M

Material

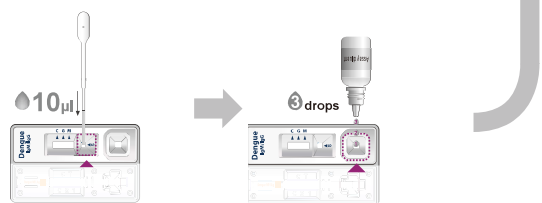
				
Test device	Assay diluent	Dropper(100µl)	Ezi tube+(10µl)	Instruction for use

Test procedure

NS1 Ag | 100µl of serum, plasma or whole blood



IgM/IgG | 10µl of serum, plasma or whole blood

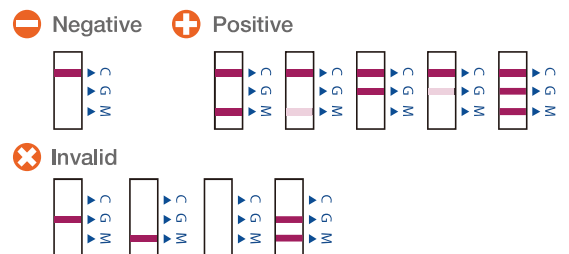


Interpretation

NS1 Ag



IgM/IgG



Ordering Information

Cat. No.	Description	Specimen	Type	Pack size
09DEN30A	Dengue Duo	Serum / Plasma / Whole blood	Device	10T/Kit